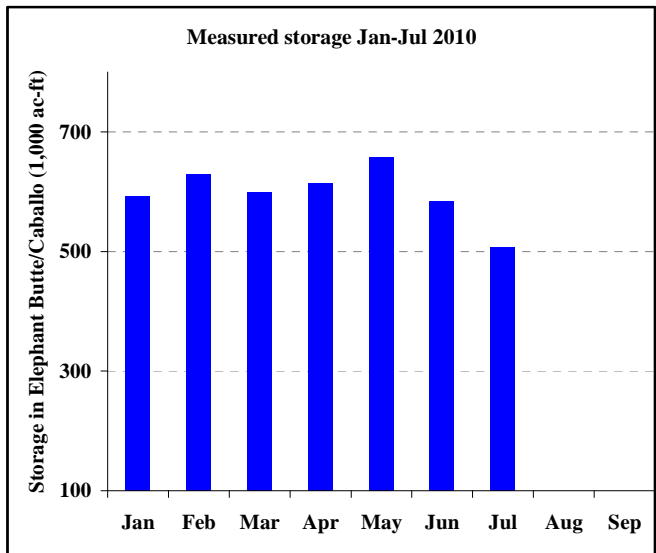
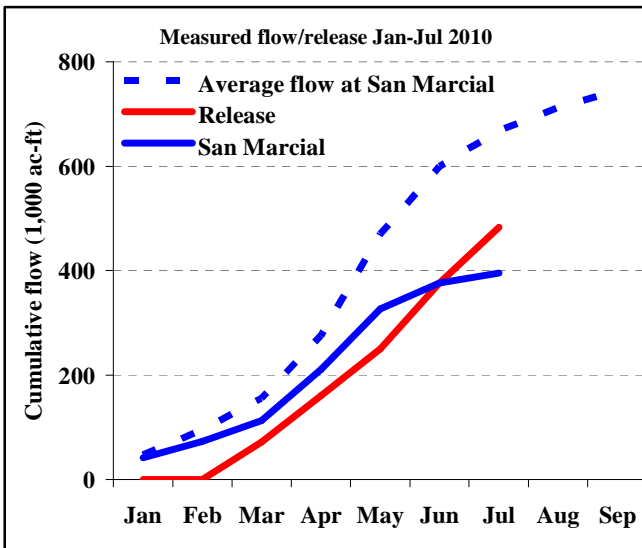
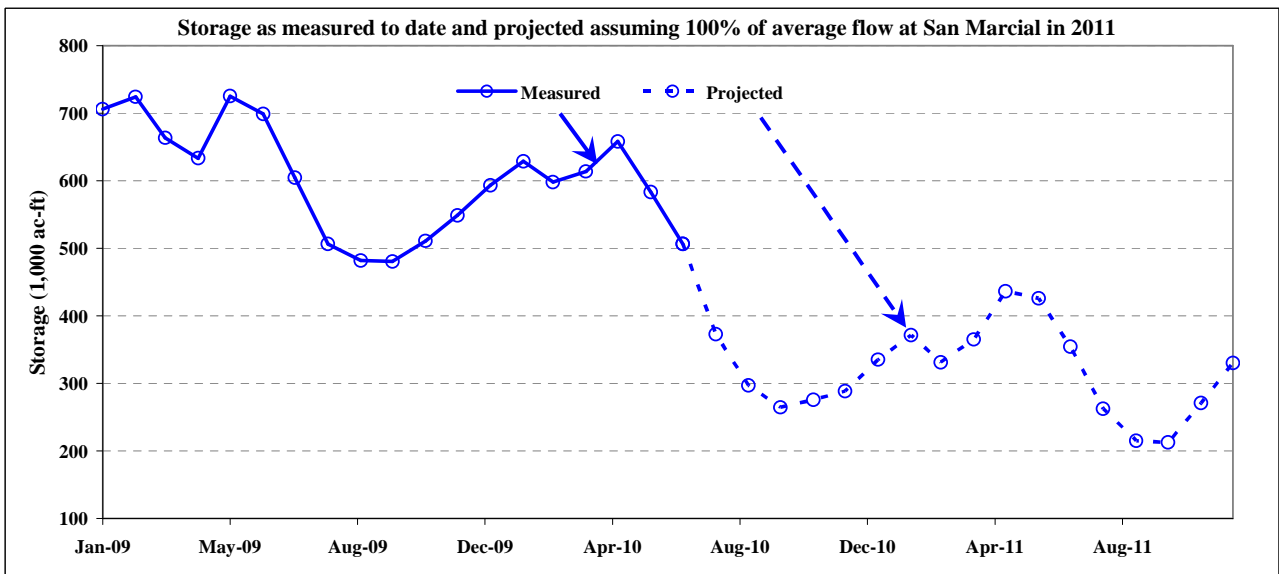
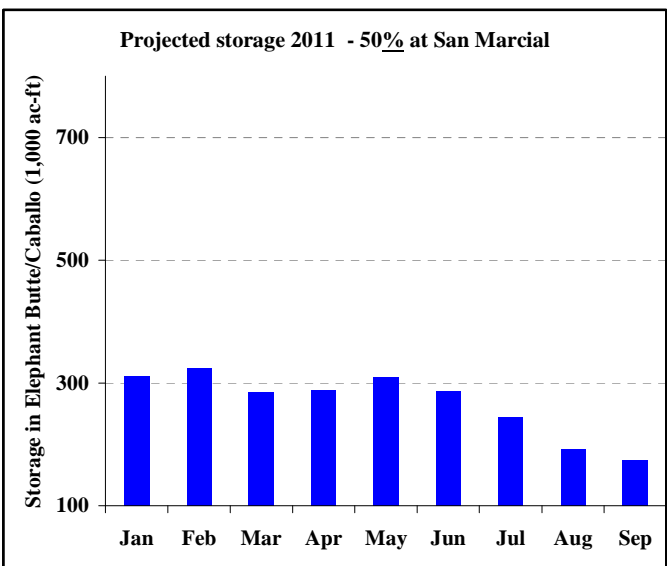
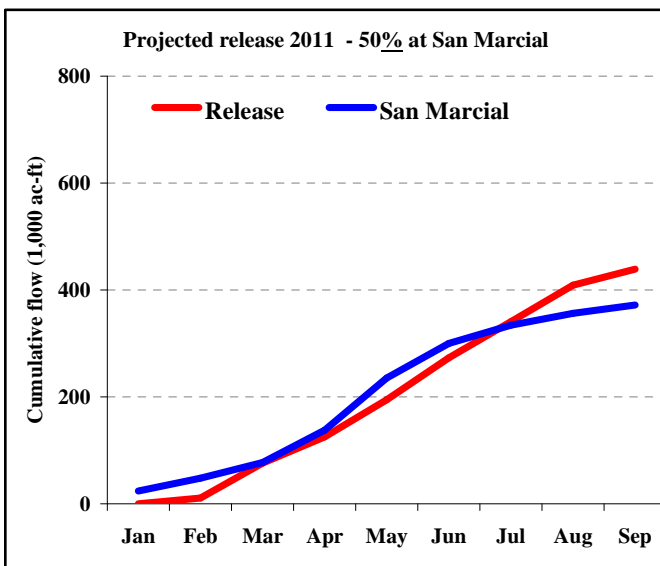
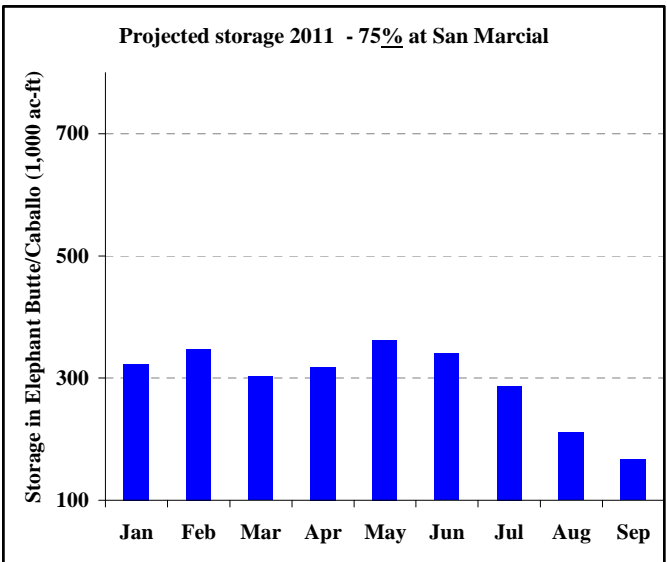
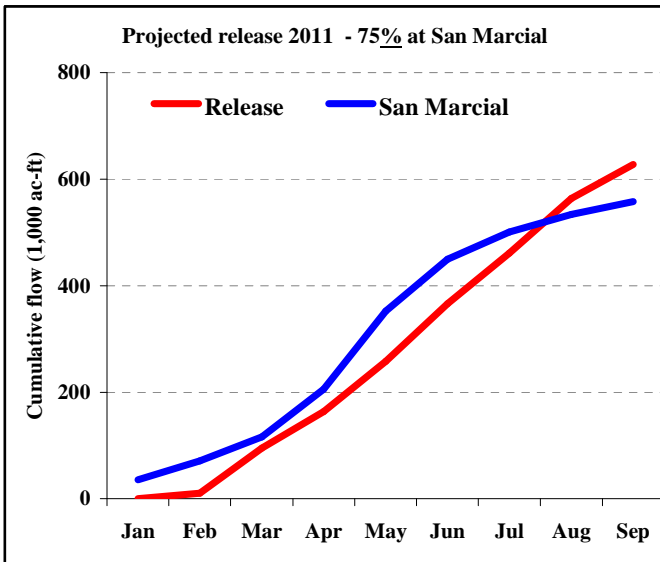
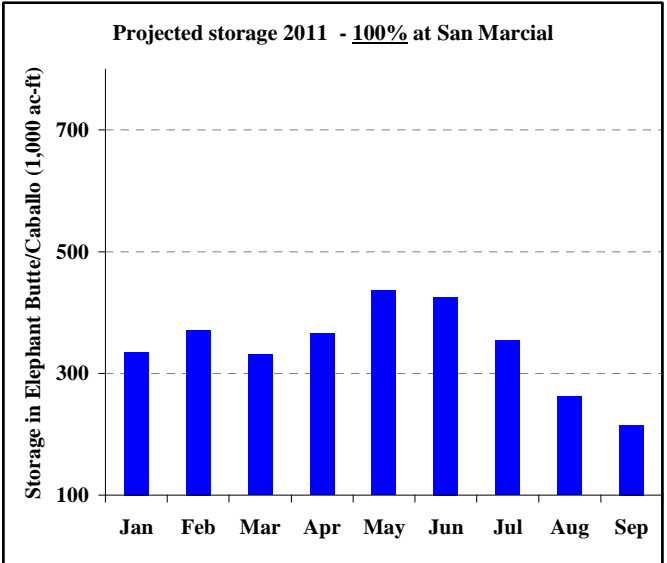
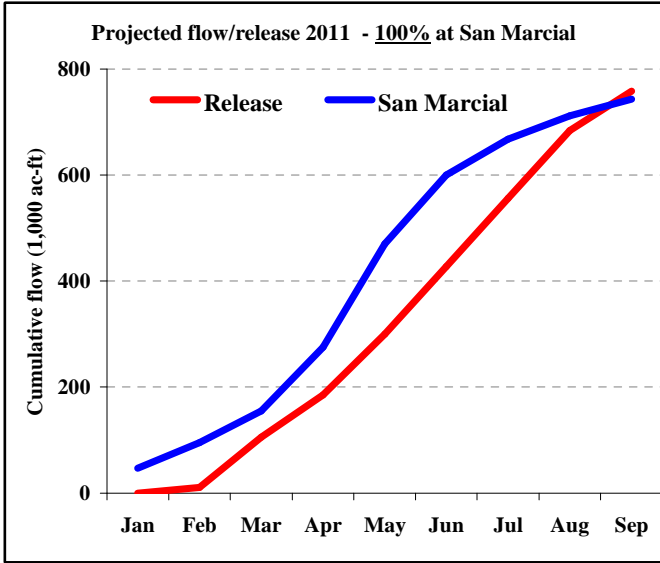


August 3, 2010 RESERVOIR LEVEL UPDATE

Storage in Elephant Butte/Caballo at the end of September is projected to be just below 300,000 ac-ft using USBR projected releases from Caballo and assuming flow at San Marcial continues at its current rate relative to the average (flow in the Rio Grande at San Marcial through July this year has been 395,000 ac-ft, which is only 59% of the average flow of 668,000 ac-ft). The release from Caballo this year has been 483,000 ac-ft through July, with an additional 193,000 ac-ft scheduled for release through the end of September. Storage and release projections for 2011 have been generated based on flow at San Marcial being 100%, 75% and 50% of the average and a minimum storage in Elephant Butte of 150,000 ac-ft.

COMBINED STORAGE at Elephant Butte and Caballo August 2, 2010 503,317 acre-feet





100% of average flow at San Marcial in 2011

EPCWID Forecast of Water Available for Release from Storage for 2011

Year	% of Normal		San Marcial KAF	Lake Evap. Rate ft/month	Elephant Butte						Caballo					
	2010	59%			Measured	Estimated	Estimated	Measured	Measured	Calculated	Measured	Estimated	Estimated	Measured	Measured	Calculated
	2011	100%			Area KA	Evap KAF	Gain KAF	Release KAF	Storage KAF	Storage KAF	Area KA	Evap KAF	Gain KAF	Release KAF	Storage KAF	Storage KAF
*	2009	1	51.1	0.27	11.4	-3.1	4.1	-0.2	682.1	682.1	2.3	-0.6	3.1	-0.7	23.9	23.9
*	2009	2	43.6	0.35	16.3	-5.8	-4.0	-35.1	680.9	680.9	2.3	-0.8	-4.3	-10.2	43.5	43.5
*	2009	3	52.9	0.58	16.3	-9.4	-1.5	-98.8	624.1	624.1	3.6	-2.1	-5.6	-95.1	39.6	39.6
*	2009	4	62.9	0.75	15.4	-11.6	11.7	-106.7	580.5	580.5	3.4	-2.5	1.5	-92.1	53.1	53.1
*	2009	5	198.9	0.84	14.7	-12.3	4.8	-106.1	665.9	665.9	4.2	-3.5	-2.0	-94.3	59.4	59.4
*	2009	6	108.0	0.98	16.1	-15.8	-2.5	-121.2	634.4	634.4	4.5	-4.4	0.5	-112.0	64.6	64.6
*	2009	7	36.1	0.91	15.6	-14.2	16.9	-124.7	548.4	548.4	4.8	-4.4	-9.3	-119.6	56.1	56.1
*	2009	8	17.0	0.77	14.1	-10.8	23.3	-111.9	466.1	466.1	4.3	-3.3	-9.0	-115.3	40.4	40.4
*	2009	9	25.4	0.65	12.6	-8.2	17.4	-52.5	448.2	448.2	3.4	-2.2	-12.1	-44.9	33.7	33.7
*	2009	10	18.8	0.51	12.2	-6.2	-4.4	-2.0	454.5	454.5	3.0	-1.5	1.5	-9.5	26.1	26.1
*	2009	11	40.3	0.36	12.3	-4.4	-5.3	-1.4	483.8	483.8	2.5	-0.9	0.8	-0.1	27.3	27.3
*	2009	12	38.6	0.26	12.9	-3.3	1.3	-0.9	519.5	519.6	2.6	-0.7	1.9	-0.1	29.4	29.4
		Totals	693.8			-104.9	61.9	-761.5				-26.9	-33.1	-693.9		
*	2010	1	41.3	0.27	13.6	-3.6	5.1	-0.8	561.5	561.5	2.7	-0.7	2.3	0.0	31.7	31.7
*	2010	2	31.0	0.35	14.3	-5.0	18.9	-39.3	567.1	567.1	2.9	-1.0	-8.1	-0.1	61.8	61.8
*	2010	3	40.5	0.58	14.4	-8.3	16.2	-74.9	540.6	540.6	4.6	-2.7	-5.5	-71.2	57.4	57.4
*	2010	4	97.9	0.75	13.9	-10.5	26.6	-112.1	542.5	542.5	4.4	-3.3	-5.4	-89.2	71.5	71.5
*	2010	5	115.5	0.84	14.0	-11.7	34.2	-80.4	600.1	600.1	5.1	-4.3	0.1	-89.5	58.3	58.3
*	2010	6	50.0	0.98	15.0	-14.7	18.4	-123.3	530.4	530.4	4.4	-4.4	1.8	-126.1	52.9	52.9
*	2010	7	18.9	0.91	13.8	-12.6	30.9	-121.6	446.0	446.0	4.2	-1.1	-5.7	-106.9	60.8	60.8
	2010	8	26.0	0.77	12.2	-9.3	-17.7	-107.2			337.8	4.6	-3.5	-2.5	-127.0	35.0
	2010	9	18.9	0.65	9.9	-6.5	-17.7	-50.2			282.3	3.1	-2.0	-2.5	-66.0	14.7
	2010	10	17.7	0.51	8.7	-4.4	-17.7	-24.2			253.8	1.6	-0.8	-2.5	-25.0	10.6
	2010	11	34.9	0.36	8.0	-2.9	-17.7	-4.9			263.2	1.3	-0.5	-2.5	0.0	12.6
	2010	12	35.5	0.26	8.3	-2.1	-17.7	-6.7			272.2	1.5	-0.4	-2.5	0.0	16.4
		Totals	528.1			-91.6	61.9	-745.8				-24.6	-33.1	-701.0		
	2011	1	47.0	0.27	8.5	-2.3	5.2	-5.8			316.3	1.8	-0.5	-2.8	-0.2	18.8
	2011	2	48.0	0.35	9.5	-3.3	5.2	-29.4			336.7	1.9	-0.7	-2.8	-10.2	34.5
	2011	3	60.0	0.58	9.9	-5.7	5.2	-104.6			291.6	3.0	-1.8	-2.8	-95.1	39.5
	2011	4	120.0	0.75	8.9	-6.7	5.2	-94.5			315.6	3.4	-2.5	-2.8	-79.2	49.5
	2011	5	195.0	0.84	9.4	-7.9	5.2	-125.9			381.9	4.0	-3.3	-2.8	-114.8	54.5
	2011	6	130.0	0.98	10.9	-10.7	5.2	-135.0			371.4	4.2	-4.2	-2.8	-128.0	54.6
	2011	7	68.0	0.91	10.6	-9.7	5.2	-135.2			299.7	4.2	-3.9	-2.8	-128.4	54.7
	2011	8	44.0	0.77	9.1	-7.0	5.2	-113.8			228.1	4.3	-3.3	-2.8	-128.0	34.5
	2011	9	32.0	0.65	7.4	-4.8	5.2	-59.8			200.6	3.0	-2.0	-2.8	-74.9	14.7
	2011	10	30.0	0.51	6.8	-3.4	5.2	-30.9			201.4	1.6	-0.8	-2.8	-31.0	11.0
	2011	11	59.0	0.36	6.8	-2.4	5.2	-5.6			257.5	1.3	-0.5	-2.8	-0.2	13.2
	2011	12	60.0	0.26	8.1	-2.1	5.2	-7.3			313.3	1.5	-0.4	-2.8	-0.2	17.1
		Totals	893.0			-66.0	61.9	-847.7				-23.7	-33.1	-790.3		

- Notes: 1) * indicates that inflow and outflow values are measured
2) Losses (such as releases and evaporation) are negative, and gains (such as inflow) are positive

75% of average flow at San Marcial in 2011

EPCWID Forecast of Water Available for Release from Storage for 2011

% of Normal		San Marcial KAF	Lake Evap. Rate ft/month	Elephant Butte						Caballo						
2010	59%			Measured	Estimated	Estimated	Measured	Measured	Calculated	Measured	Estimated	Estimated	Measured	Measured	Calculated	
2011	75%			Area KA	Evap KAF	Gain KAF	Release KAF	Storage KAF	Storage KAF	Area KA	Evap KAF	Gain KAF	Release KAF	Storage KAF	Storage KAF	
Year	Month															
*	2009	1	51.1	0.27	11.4	-3.1	4.1	-0.2	682.1	682.1	2.3	-0.6	3.1	-0.7	23.9	23.9
*	2009	2	43.6	0.35	16.3	-5.8	-4.0	-35.1	680.9	680.9	2.3	-0.8	-4.3	-10.2	43.5	43.5
*	2009	3	52.9	0.58	16.3	-9.4	-1.5	-98.8	624.1	624.1	3.6	-2.1	-5.6	-95.1	39.6	39.6
*	2009	4	62.9	0.75	15.4	-11.6	11.7	-106.7	580.5	580.5	3.4	-2.5	1.5	-92.1	53.1	53.1
*	2009	5	198.9	0.84	14.7	-12.3	4.8	-106.1	665.9	665.9	4.2	-3.5	-2.0	-94.3	59.4	59.4
*	2009	6	108.0	0.98	16.1	-15.8	-2.5	-121.2	634.4	634.4	4.5	-4.4	0.5	-112.0	64.6	64.6
*	2009	7	36.1	0.91	15.6	-14.2	16.9	-124.7	548.4	548.4	4.8	-4.4	-9.3	-119.6	56.1	56.1
*	2009	8	17.0	0.77	14.1	-10.8	23.3	-111.9	466.1	466.1	4.3	-3.3	-9.0	-115.3	40.4	40.4
*	2009	9	25.4	0.65	12.6	-8.2	17.4	-52.5	448.2	448.2	3.4	-2.2	-12.1	-44.9	33.7	33.7
*	2009	10	18.8	0.51	12.2	-6.2	-4.4	-2.0	454.5	454.5	3.0	-1.5	1.5	-9.5	26.1	26.1
*	2009	11	40.3	0.36	12.3	-4.4	-5.3	-1.4	483.8	483.8	2.5	-0.9	0.8	-0.1	27.3	27.3
*	2009	12	38.6	0.26	12.9	-3.3	1.3	-0.9	519.5	519.6	2.6	-0.7	1.9	-0.1	29.4	29.4
		Totals	693.8			-104.9	61.9	-761.5				-26.9	-33.1	-693.9		
*	2010	1	41.3	0.27	13.6	-3.6	5.1	-0.8	561.5	561.5	2.7	-0.7	2.3	0.0	31.7	31.7
*	2010	2	31.0	0.35	14.3	-5.0	18.9	-39.3	567.1	567.1	2.9	-1.0	-8.1	-0.1	61.8	61.8
*	2010	3	40.5	0.58	14.4	-8.3	16.2	-74.9	540.6	540.6	4.6	-2.7	-5.5	-71.2	57.4	57.4
*	2010	4	97.9	0.75	13.9	-10.5	26.6	-112.1	542.5	542.5	4.4	-3.3	-5.4	-89.2	71.5	71.5
*	2010	5	115.5	0.84	14.0	-11.7	34.2	-80.4	600.1	600.1	5.1	-4.3	0.1	-89.5	58.3	58.3
*	2010	6	50.0	0.98	15.0	-14.7	18.4	-123.3	530.4	530.4	4.4	-4.4	1.8	-126.1	52.9	52.9
*	2010	7	18.9	0.91	13.8	-12.6	30.9	-121.6	446.0	446.0	4.2	-1.1	-5.7	-106.9	60.8	60.8
	2010	8	26.0	0.77	12.2	-9.3	-17.7	-107.2		337.8	4.6	-3.5	-2.5	-127.0		35.0
	2010	9	18.9	0.65	9.9	-6.5	-17.7	-50.2		282.3	3.1	-2.0	-2.5	-66.0		14.7
	2010	10	17.7	0.51	8.7	-4.4	-17.7	-24.2		253.8	1.6	-0.8	-2.5	-25.0		10.6
	2010	11	34.9	0.36	8.0	-2.9	-17.7	-4.9		263.2	1.3	-0.5	-2.5	0.0		12.6
	2010	12	35.5	0.26	8.3	-2.1	-17.7	-6.7		272.2	1.5	-0.4	-2.5	0.0		16.4
		Totals	528.1			-91.6	61.9	-745.8				-24.6	-33.1	-701.0		
	2011	1	35.3	0.27	8.5	-2.3	5.2	-5.8		304.5	1.8	-0.5	-2.8	-0.2		18.8
	2011	2	36.0	0.35	9.2	-3.2	5.2	-29.4		313.0	1.9	-0.7	-2.8	-10.2		34.5
	2011	3	45.0	0.58	9.4	-5.4	5.2	-94.6		263.2	3.0	-1.8	-2.8	-85.1		39.5
	2011	4	90.0	0.75	8.3	-6.2	5.2	-83.3		268.9	3.4	-2.5	-2.8	-68.0		49.5
	2011	5	146.3	0.84	8.4	-7.0	5.2	-105.9		307.3	4.0	-3.3	-2.8	-94.8		54.5
	2011	6	97.5	0.98	9.3	-9.1	5.2	-115.0		286.0	4.2	-4.2	-2.8	-108.0		54.6
	2011	7	51.0	0.91	8.8	-8.0	5.2	-101.6		232.5	4.2	-3.9	-2.8	-94.8		54.7
	2011	8	33.0	0.77	7.5	-5.8	5.2	-88.8		176.0	4.3	-3.3	-2.8	-103.0		34.5
	2011	9	24.0	0.65	6.1	-4.0	5.2	-48.6		152.6	3.0	-2.0	-2.8	-63.7		14.7
	2011	10	22.5	0.51	5.5	-2.8	5.2	-25.9		151.5	1.6	-0.8	-2.8	-26.0		11.0
	2011	11	44.3	0.36	5.5	-2.0	5.2	-5.6		193.3	1.3	-0.5	-2.8	-0.2		13.2
	2011	12	45.0	0.26	6.6	-1.7	5.2	-7.3		234.6	1.5	-0.4	-2.8	-0.2		17.1
		Totals	669.8			-57.5	61.9	-711.8				-23.7	-33.1	-654.3		

- Notes: 1) * indicates that inflow and outflow values are measured
2) Losses (such as releases and evaporation) are negative, and gains (such as inflow) are positive

50% of average flow at San Marcial in 2011

EPCWID Forecast of Water Available for Release from Storage for 2011

% of Normal		San Marcial	Lake Evap. Rate ft/month	Elephant Butte						Caballo						
2010	59%			Measured	Estimated	Estimated	Measured	Measured	Calculated	Measured	Estimated	Estimated	Measured	Measured	Calculated	
2011	50%	KAF		Area	Evap	Gain	Release	Storage	Storage	Area	Evap	Gain	Release	Storage	Storage	
Year	Month			KA	KAF	KAF	KAF	KAF	KAF	KAF	KAF	KA	KAF	KAF	KAF	KAF
*	2009	1	51.1	0.27	11.4	-3.1	4.1	-0.2	682.1	682.1	2.3	-0.6	3.1	-0.7	23.9	23.9
*	2009	2	43.6	0.35	16.3	-5.8	-4.0	-35.1	680.9	680.9	2.3	-0.8	-4.3	-10.2	43.5	43.5
*	2009	3	52.9	0.58	16.3	-9.4	-1.5	-98.8	624.1	624.1	3.6	-2.1	-5.6	-95.1	39.6	39.6
*	2009	4	62.9	0.75	15.4	-11.6	11.7	-106.7	580.5	580.5	3.4	-2.5	1.5	-92.1	53.1	53.1
*	2009	5	198.9	0.84	14.7	-12.3	4.8	-106.1	665.9	665.9	4.2	-3.5	-2.0	-94.3	59.4	59.4
*	2009	6	108.0	0.98	16.1	-15.8	-2.5	-121.2	634.4	634.4	4.5	-4.4	0.5	-112.0	64.6	64.6
*	2009	7	36.1	0.91	15.6	-14.2	16.9	-124.7	548.4	548.4	4.8	-4.4	-9.3	-119.6	56.1	56.1
*	2009	8	17.0	0.77	14.1	-10.8	23.3	-111.9	466.1	466.1	4.3	-3.3	-9.0	-115.3	40.4	40.4
*	2009	9	25.4	0.65	12.6	-8.2	17.4	-52.5	448.2	448.2	3.4	-2.2	-12.1	-44.9	33.7	33.7
*	2009	10	18.8	0.51	12.2	-6.2	-4.4	-2.0	454.5	454.5	3.0	-1.5	1.5	-9.5	26.1	26.1
*	2009	11	40.3	0.36	12.3	-4.4	-5.3	-1.4	483.8	483.8	2.5	-0.9	0.8	-0.1	27.3	27.3
*	2009	12	38.6	0.26	12.9	-3.3	1.3	-0.9	519.5	519.6	2.6	-0.7	1.9	-0.1	29.4	29.4
		Totals	693.8			-104.9	61.9	-761.5				-26.9	-33.1	-693.9		
*	2010	1	41.3	0.27	13.6	-3.6	5.1	-0.8	561.5	561.5	2.7	-0.7	2.3	0.0	31.7	31.7
*	2010	2	31.0	0.35	14.3	-5.0	18.9	-39.3	567.1	567.1	2.9	-1.0	-8.1	-0.1	61.8	61.8
*	2010	3	40.5	0.58	14.4	-8.3	16.2	-74.9	540.6	540.6	4.6	-2.7	-5.5	-71.2	57.4	57.4
*	2010	4	97.9	0.75	13.9	-10.5	26.6	-112.1	542.5	542.5	4.4	-3.3	-5.4	-89.2	71.5	71.5
*	2010	5	115.5	0.84	14.0	-11.7	34.2	-80.4	600.1	600.1	5.1	-4.3	0.1	-89.5	58.3	58.3
*	2010	6	50.0	0.98	15.0	-14.7	18.4	-123.3	530.4	530.4	4.4	-4.4	1.8	-126.1	52.9	52.9
*	2010	7	18.9	0.91	13.8	-12.6	30.9	-121.6	446.0	446.0	4.2	-1.1	-5.7	-106.9	60.8	60.8
	2010	8	26.0	0.77	12.2	-9.3	-17.7	-107.2		337.8	4.6	-3.5	-2.5	-127.0		35.0
	2010	9	18.9	0.65	9.9	-6.5	-17.7	-50.2		282.3	3.1	-2.0	-2.5	-66.0		14.7
	2010	10	17.7	0.51	8.7	-4.4	-17.7	-24.2		253.8	1.6	-0.8	-2.5	-25.0		10.6
	2010	11	34.9	0.36	8.0	-2.9	-17.7	-4.9		263.2	1.3	-0.5	-2.5	0.0		12.6
	2010	12	35.5	0.26	8.3	-2.1	-17.7	-6.7		272.2	1.5	-0.4	-2.5	0.0		16.4
		Totals	528.1			-91.6	61.9	-745.8				-24.6	-33.1	-701.0		
	2011	1	23.5	0.27	8.5	-2.3	5.2	-5.8		292.8	1.8	-0.5	-2.8	-0.2		18.8
	2011	2	24.0	0.35	8.9	-3.1	5.2	-29.4		289.4	1.9	-0.7	-2.8	-10.2		34.5
	2011	3	30.0	0.58	8.9	-5.1	5.2	-74.6		244.9	3.0	-1.8	-2.8	-65.1		39.5
	2011	4	60.0	0.75	7.8	-5.9	5.2	-64.5		239.7	3.4	-2.5	-2.8	-49.2		49.5
	2011	5	97.5	0.84	7.7	-6.5	5.2	-80.9		255.0	4.0	-3.3	-2.8	-69.8		54.5
	2011	6	65.0	0.98	8.1	-7.9	5.2	-85.0		232.3	4.2	-4.2	-2.8	-78.0		54.6
	2011	7	34.0	0.91	7.5	-6.9	5.2	-75.2		189.4	4.2	-3.9	-2.8	-68.4		54.7
	2011	8	22.0	0.77	6.5	-5.0	5.2	-53.8		157.7	4.3	-3.3	-2.8	-68.0		34.5
	2011	9	16.0	0.65	5.7	-3.7	5.2	-14.8		160.4	3.0	-2.0	-2.8	-29.9		14.7
	2011	10	15.0	0.51	5.7	-2.9	5.2	-20.9		156.7	1.6	-0.8	-2.8	-21.0		11.0
	2011	11	29.5	0.36	5.6	-2.0	5.2	-5.6		183.7	1.3	-0.5	-2.8	-0.2		13.2
	2011	12	30.0	0.26	6.3	-1.6	5.2	-7.3		210.0	1.5	-0.4	-2.8	-0.2		17.1
		Totals	446.5			-52.8	61.9	-517.7				-23.7	-33.1	-460.3		

- Notes: 1) * indicates that inflow and outflow values are measured
2) Losses (such as releases and evaporation) are negative, and gains (such as inflow) are positive