

March 24, 2013 RESERVOIR LEVEL AND SNOW UPDATE

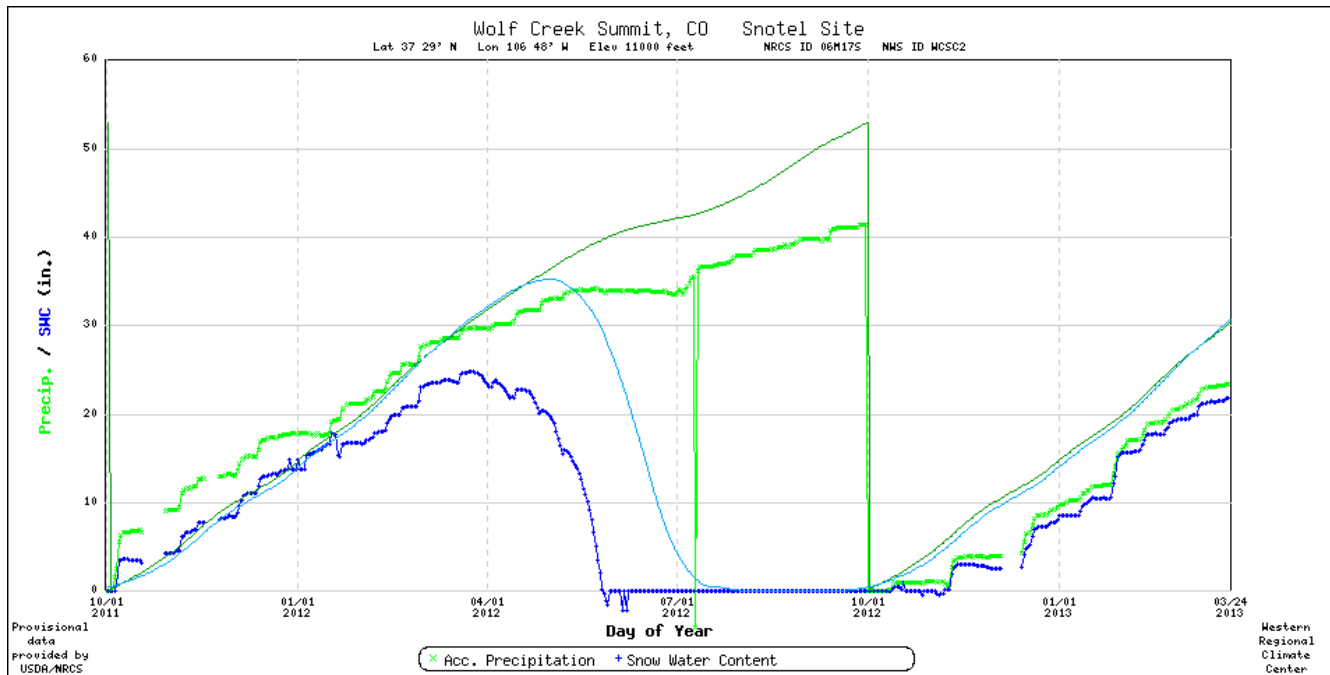
Last week the snowpack did not make any gains relative to the average, and remains below 80% in the Upper Rio Grande, Rio Chama and Sangre de Cristo basins. Wolf Creek summit, at 21.9 inches, is at 77% of the median. In 24 of the past 26 years (92% of the years) the snowpack at Wolf Creek on this date was 70% to 100% of the maximum snowpack that year. Based on these 26 years, the greatest probability (12 years or 46%) is that the current snowpack will be 80% to 90% of the maximum this year, corresponding to about 24 to 27 inches compared to the average maximum of 35 inches. There is not much chance of snow in the forecast for this coming week. The increase in storage in Elephant Butte/Caballo has also been lower the past few days, at less than 500 ac-ft per day.

COMBINED STORAGE Elephant Butte and Caballo March 21, 2013 228,074 acre-feet

S N O W - P R E C I P I T A T I O N U P D A T E
Based on Mountain Data from NRCS SNOTEL Sites
As of Sunday March 24, 2013

BASIN	SNOW WATER EQUIVALENT	TOTAL PRECIPITATION
Data Site Name	%	%
	Avg	Avg
UPPER RIO GRANDE BASIN		
Basin wide percent of average	76	70
RIO CHAMA BASIN		
Basin wide percent of average	67	64
SANGRE DE CRISTO MOUNTAIN RANGE BASINS		
Basin wide percent of average	76	70

WOLF CREEK



FORECAST

UPPER RIO GRANDE VALLEY/EASTERN SAN JUAN MOUNTAINS BELOW 10000 FT-
INCLUDING...CREEDE...SOUTH FORK

330 AM MDT SUN MAR 24 2013

TODAY

MOSTLY SUNNY. A 20 PERCENT CHANCE OF SNOW LATE IN THE AFTERNOON. HIGHS 24 TO 32. WEST WINDS 10 TO 15 MPH. WIND CHILL READINGS 11 BELOW TO 21 BELOW ZERO IN THE MORNING.

TONIGHT

MOSTLY CLOUDY WITH A 20 PERCENT CHANCE OF SNOW. LOWS 5 BELOW TO 8 ABOVE ZERO. NORTHWEST WINDS 10 TO 15 MPH BECOMING WEST AFTER MIDNIGHT. WIND CHILL READINGS 8 BELOW TO 18 BELOW ZERO AFTER MIDNIGHT.

MONDAY

PARTLY SUNNY. HIGHS 26 TO 33. WEST WINDS UP TO 10 MPH. WIND CHILL READINGS 10 BELOW TO 20 BELOW ZERO IN THE MORNING.

MONDAY NIGHT

PARTLY CLOUDY. LOWS 1 TO 16. WEST WINDS UP TO 10 MPH.

TUESDAY

PARTLY SUNNY. HIGHS 37 TO 44. WEST WINDS 10 TO 15 MPH.

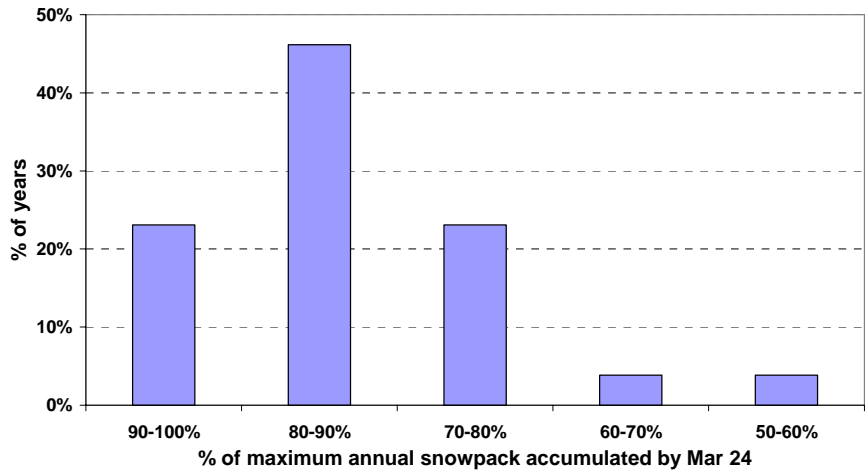
TUESDAY NIGHT THROUGH THURSDAY NIGHT

PARTLY CLOUDY. LOWS 15 TO 29. HIGHS 42 TO 52.

FRIDAY THROUGH SATURDAY

MOSTLY CLOUDY. HIGHS 42 TO 51. LOWS 19 TO 27.

% of years at Wolf Creek Summit in which the snowpack on Mar 24, as a % of the maximum annual snowpack that year, fell within selected ranges. 1986-2012



Annual Maximum and March 24th Snow water Accumulation at Wolf Creek Summit

