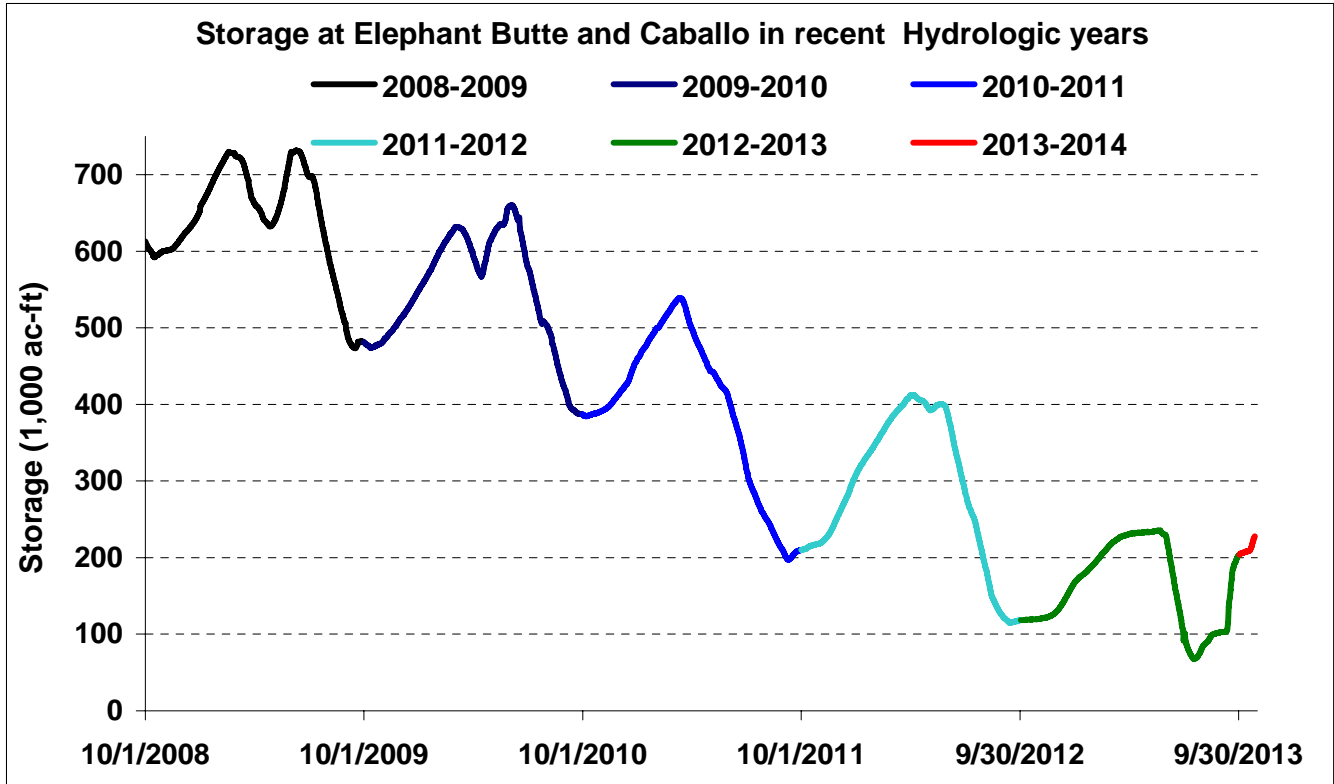
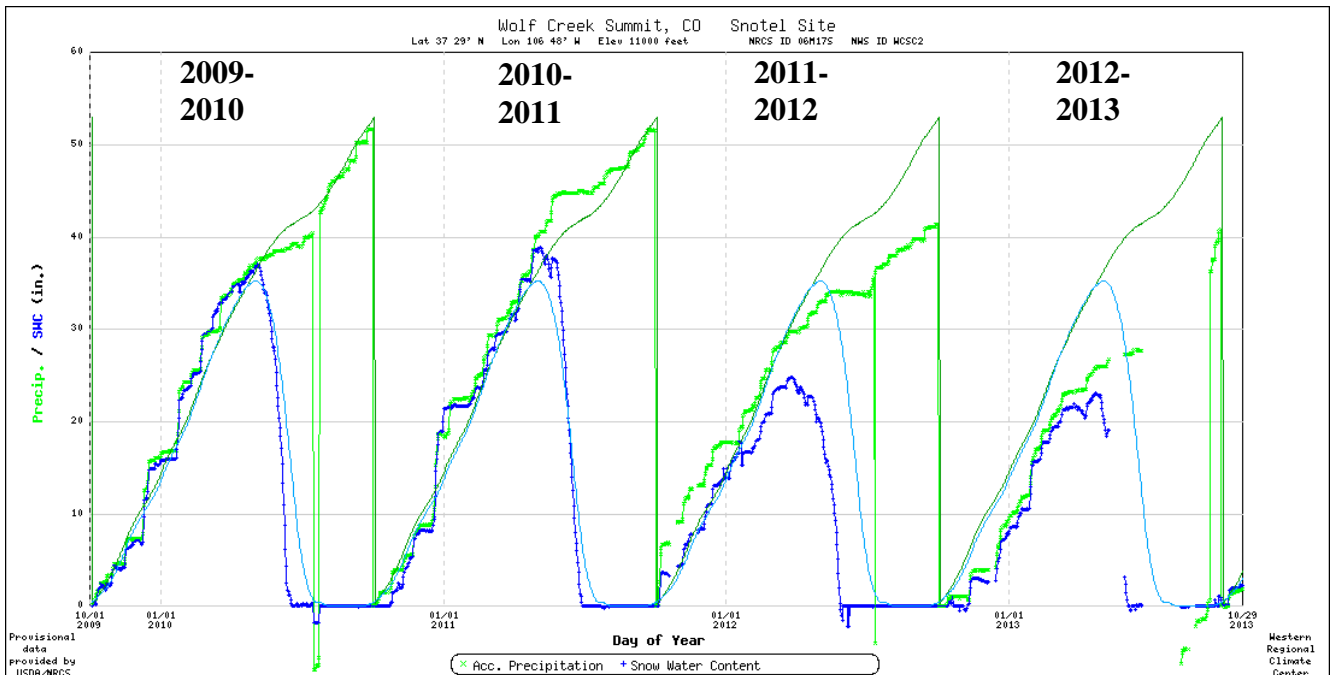


# October 30, 2013 RESERVOIR LEVEL AND SNOW UPDATE

The new hydrologic year has been in progress for a month now, and while it is too early to see what is happening this year, looking back at previous years is worthwhile. Storage in Elephant Butte/Caballo has been decreasing for five years, but the recent boosts due to storms is a good start to the year. Flow at San Marcial has been above the median since the September storm, and this has resulted in good storage increases in both dams. The snowpack at Wolf Creek summit has been lower than average the past two years, but it is off to a good start this year with recent snowfalls.



Wolf Creek Summit snow water equivalent for the last 5 hydrologic years



### Median and current year flow at San Marcial

